



---

## Fra ekle kryp til blodig alvor

Karsten Heia

---

## Spektroskopi og fisk – Hvorfor det?

- Hvor startet vi:
  - Kveispåvisning
- Hvor er vi i dag:
  - Blodanalyse på filet
  - Kvalitetskontroll/sortering i filetlinje
  - Overflate eller inne i filet
- Hvor vil vi:
  - Blodanalyse rund fisk
  - Kvalitetskontroll på kaia ved levering
  - Påvisning av fangstskader og manglende utblødning

Hastighet og oppløsning (romlig og spektralt)

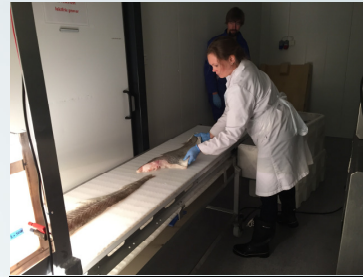
## Hyperspektral avbildning

Kjøres i dag på 400 mm/s

Ved redusert romlig oppløsning  
kan hastighet enkelt økes

For eksempel:

Interaktans  $1.0 \times 1.0 \text{ mm}^2$  romlig  
→ 1600 mm/s (1.6 m/s)



Begge avbildende spektrografer levert av Norsk Elektrooptikk

4



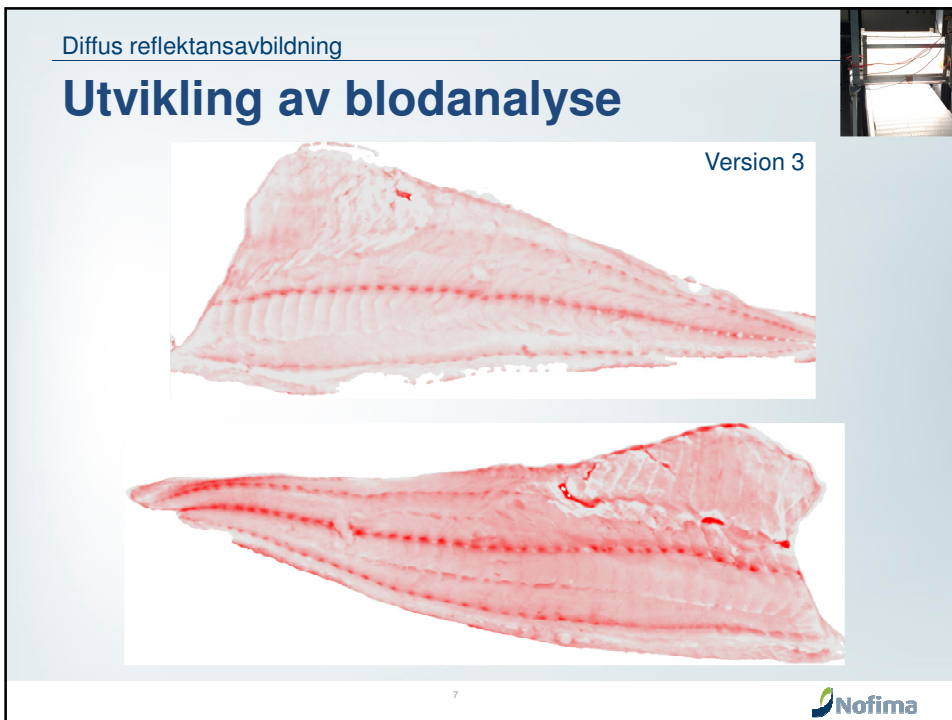
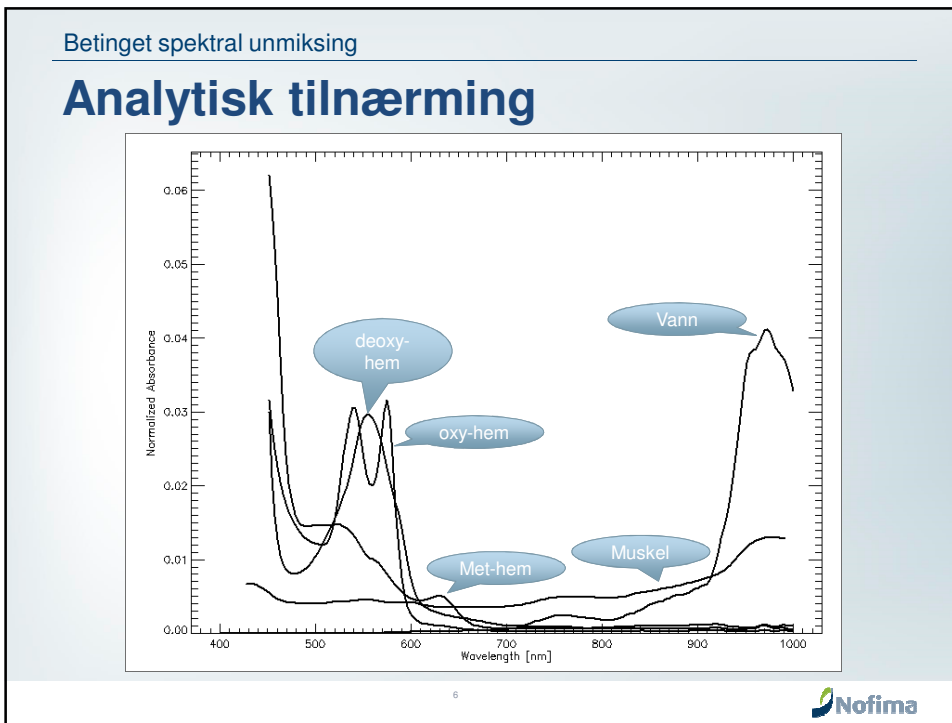
Betinget spektral unmixing

## Analysetilnærming

- Antar at lyset som blir borte i prøven forsvinner på grunn av to ting
  1. Spredning
  2. Absorpsjon
- Følgende kjemiske komponenter i torskfilet:
  - Vann, blod (ulik oksidasjonstilstand)
- I tillegg brukes «ren» torskemuskel i analysen

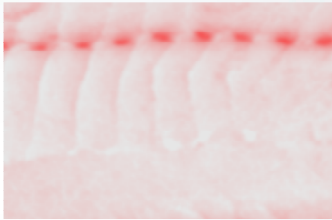
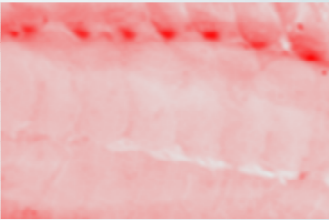
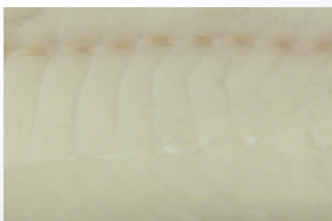

5






Forskjell i tykkfisk på stresset og ustresset torsk

## Utvikling av blodanalyse

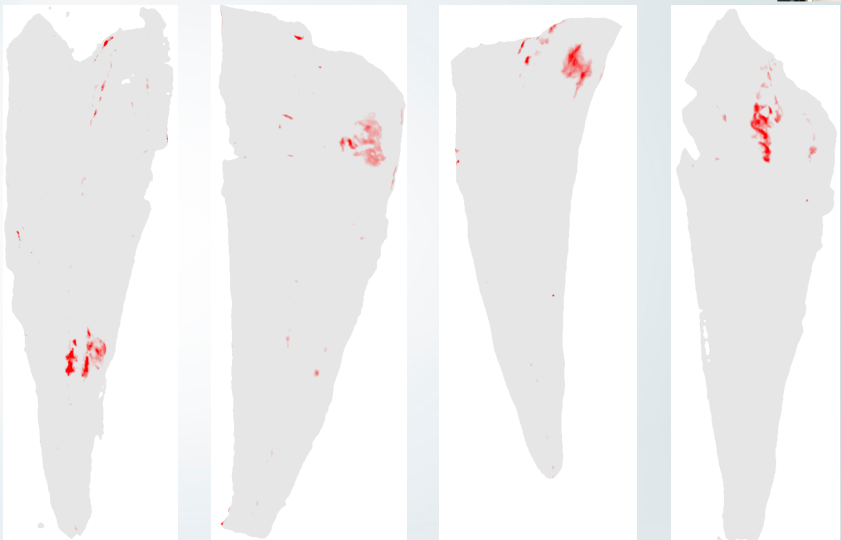
Ustresset	Stresset
	
	

8




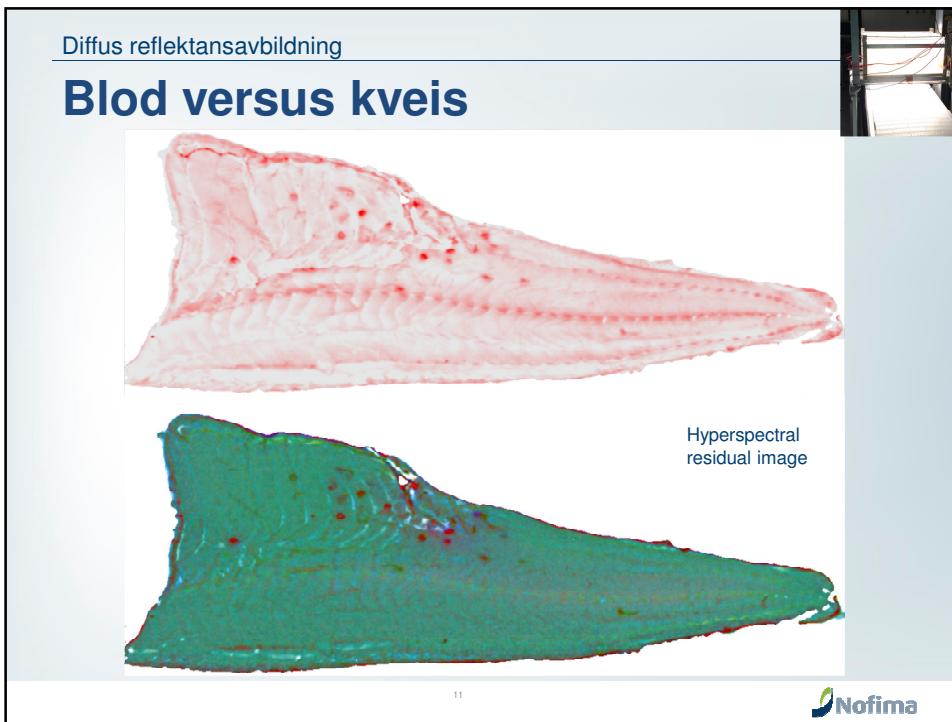
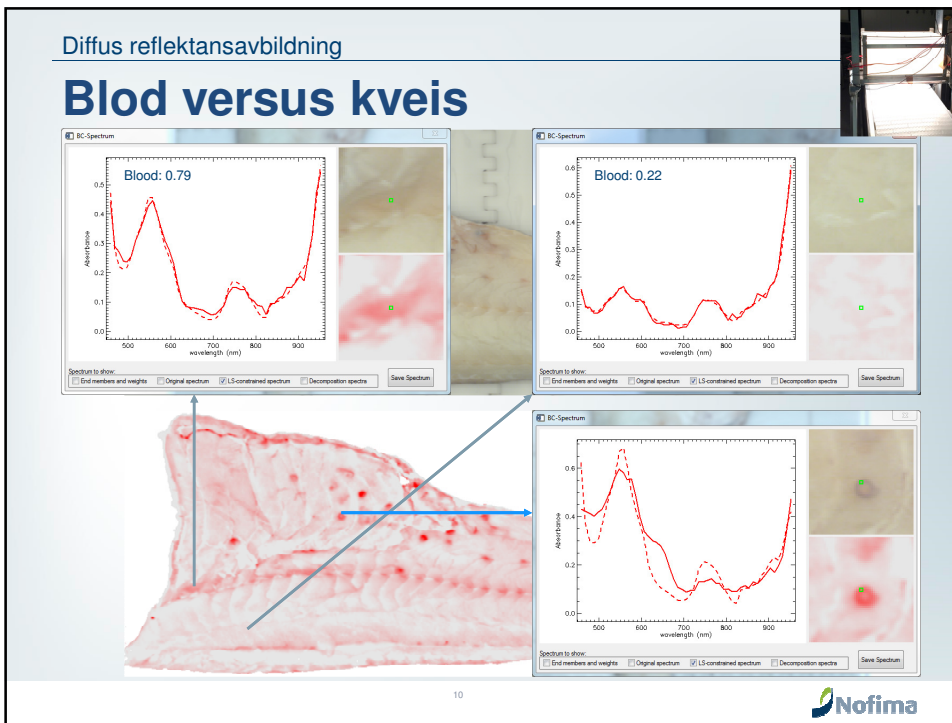
Diffus reflektansavbildning

## Påvisning av blodflekker



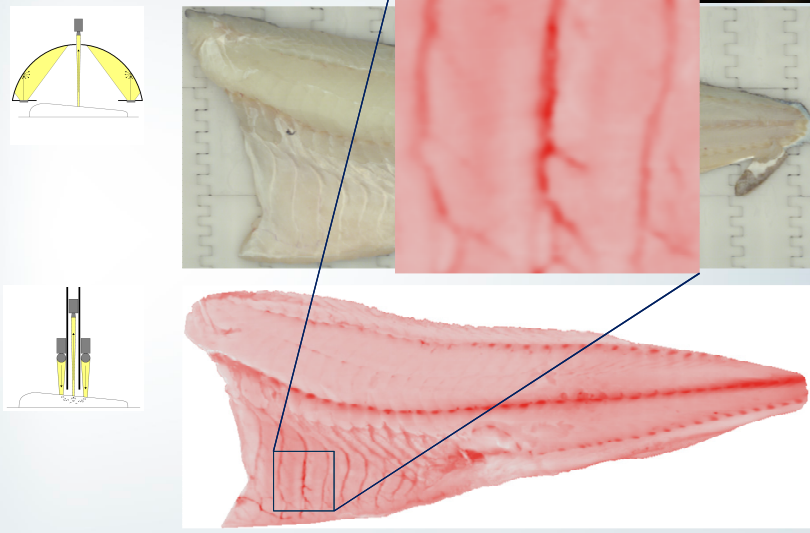
9






Hyperspectral imaging – Interactance

## Blood analysis



The figure illustrates the process of blood analysis using hyperspectral imaging. On the left, a diagram shows a probe with a yellow fan-shaped beam of light directed at a surface. Below it, a photograph shows the probe being used on a fish. The fish's body is overlaid with a red heatmap, where darker red indicates higher blood concentration. A rectangular box on the heatmap is magnified into a larger, more detailed red heatmap above it. In the top right corner, there is a small inset image showing a fish illuminated from below, creating a glowing effect.

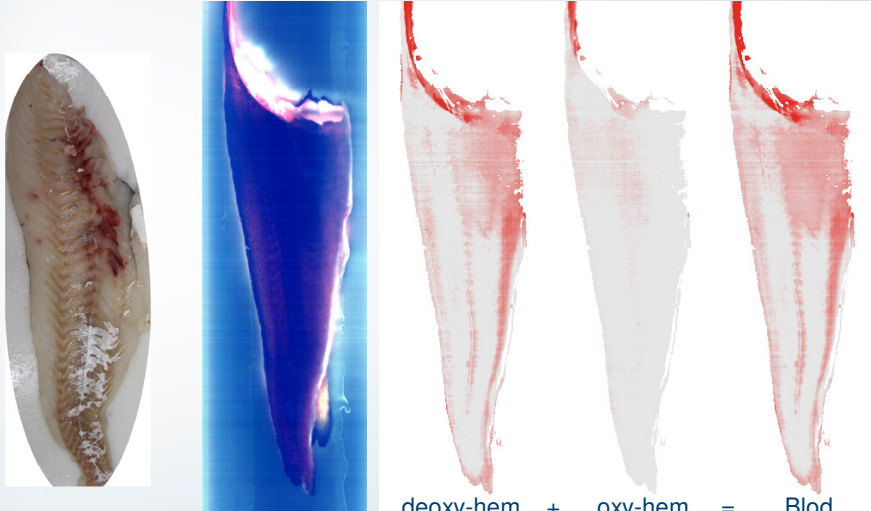
12



Interaktansavbildning


## Blodanalyse gjennom skinn

Blod målt gjennom skinn



This figure shows the results of blood analysis through the skin. On the left is a photograph of a fish. Next to it is a blue-tinted image of the fish, likely representing a specific spectral channel. To the right are three heatmaps of the fish, showing the distribution of blood components. The first heatmap is labeled 'deoxy-hem', the second 'oxy-hem', and the third 'Blod'. Below the heatmaps, the equation  $deoxy-hem + oxy-hem = Blod$  is displayed. A small number '13' is located below the equation.

13



## Instrumentell blodmåling

- Sensitiv og objektiv måling av blod
  - Kan kjøres på industriell hastighet
  - Sensitivitet kan justeres i forhold grenseverdier
  - Fungerer på fileten, både overflate og inne i fileten
  - For rund fisk gjennom skinn gjenstår ennå noe arbeid på analysesiden