

# Lakselus utvikling i et området med koordinert brakklegging, gjennom 3 produksjonssykluser

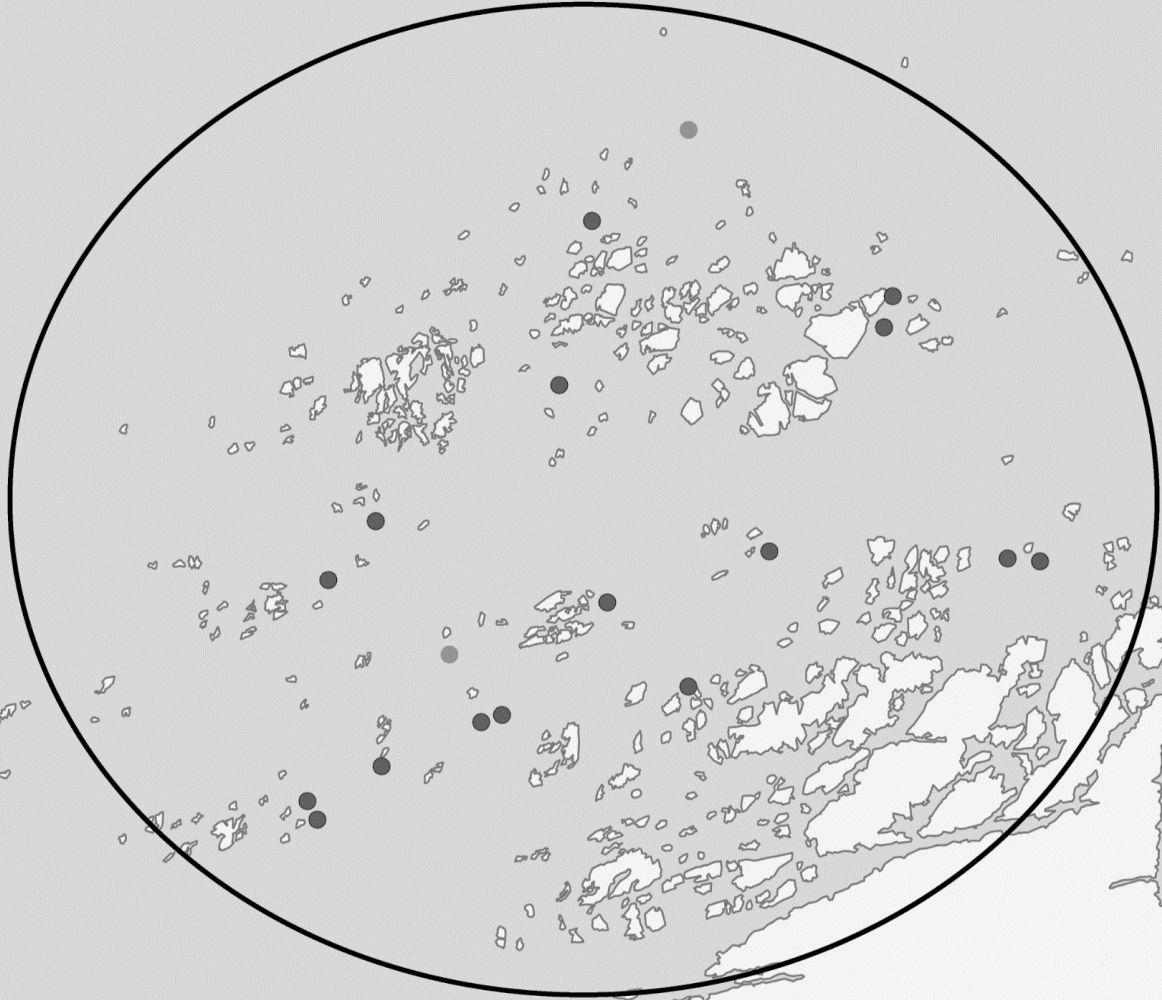
Lone S. Jevne

Taskforce Lakselus

31.10.2019







Frøya

# De viktigste funnene

- Lusesituasjonen bør behandles på område basis.
- Tidlig utsett av rensefisk og tidlige avlusninger ser ut til å være viktig.

## Produksjonssyklus 1

2013 – 2014

Antall anlegg

14

Antall merder

103

## Produksjonssyklus 2

2015 – 2016

Antall anlegg

16

Antall merder

128

## Produksjonssyklus 3

2017 – 2018

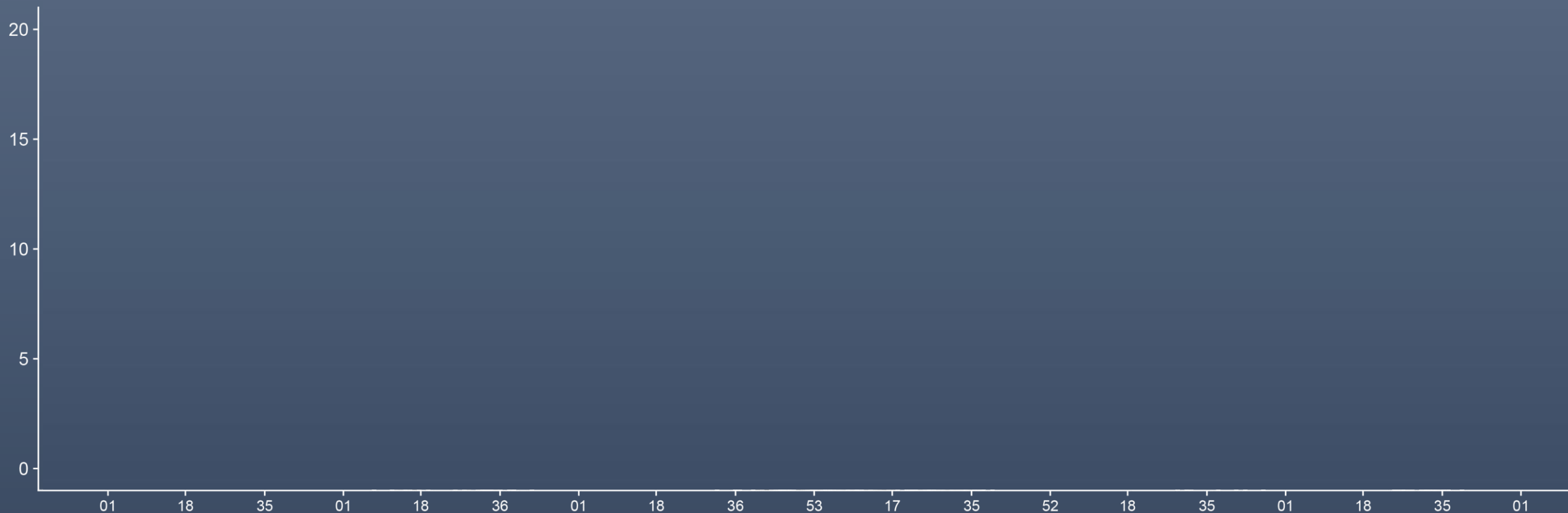
Antall anlegg

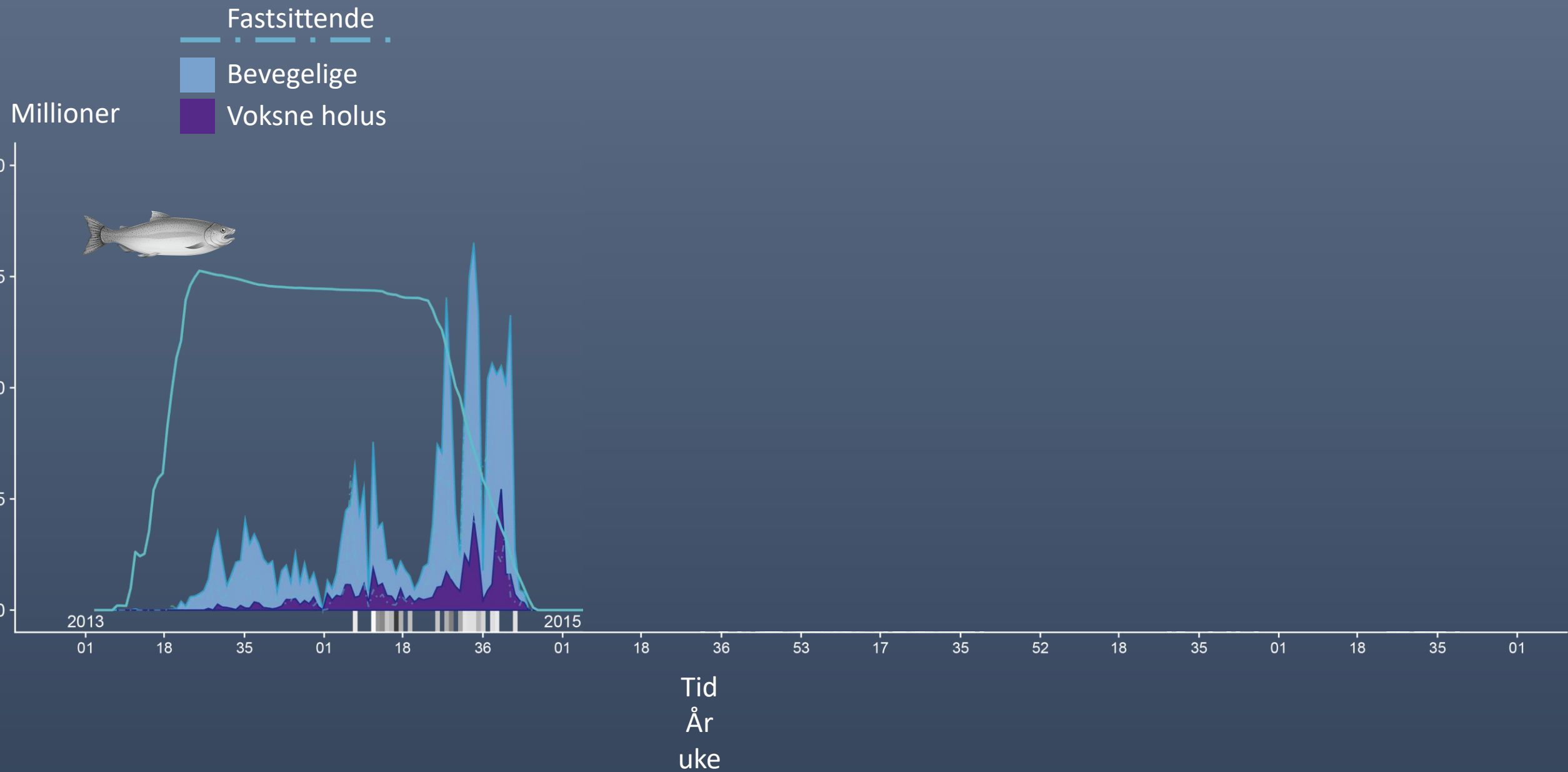
17

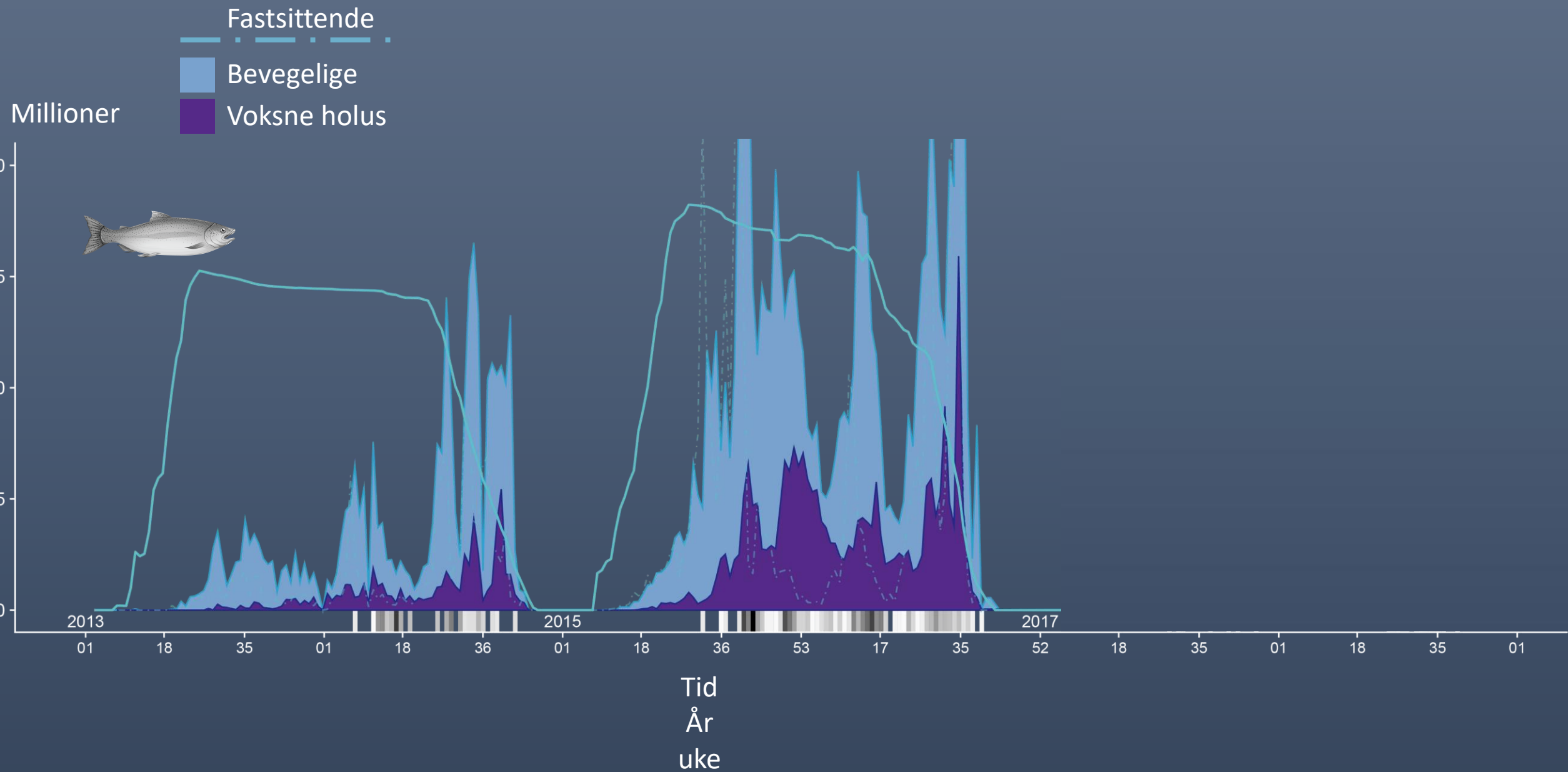
Antall merder

129

Millioner



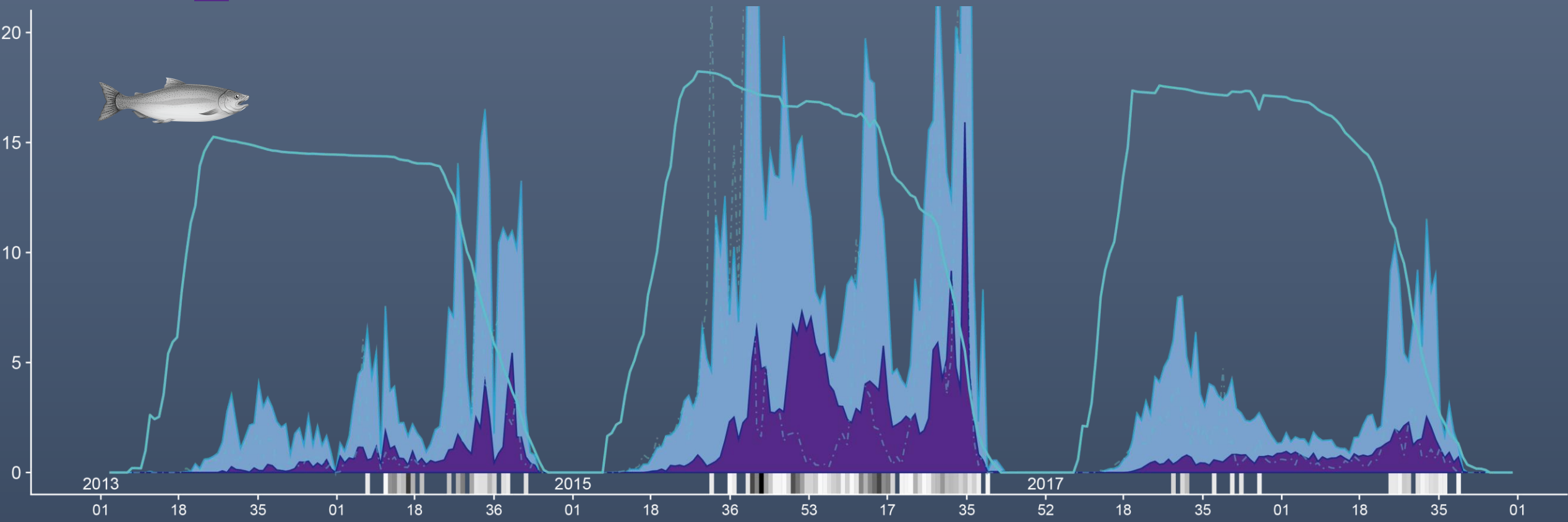




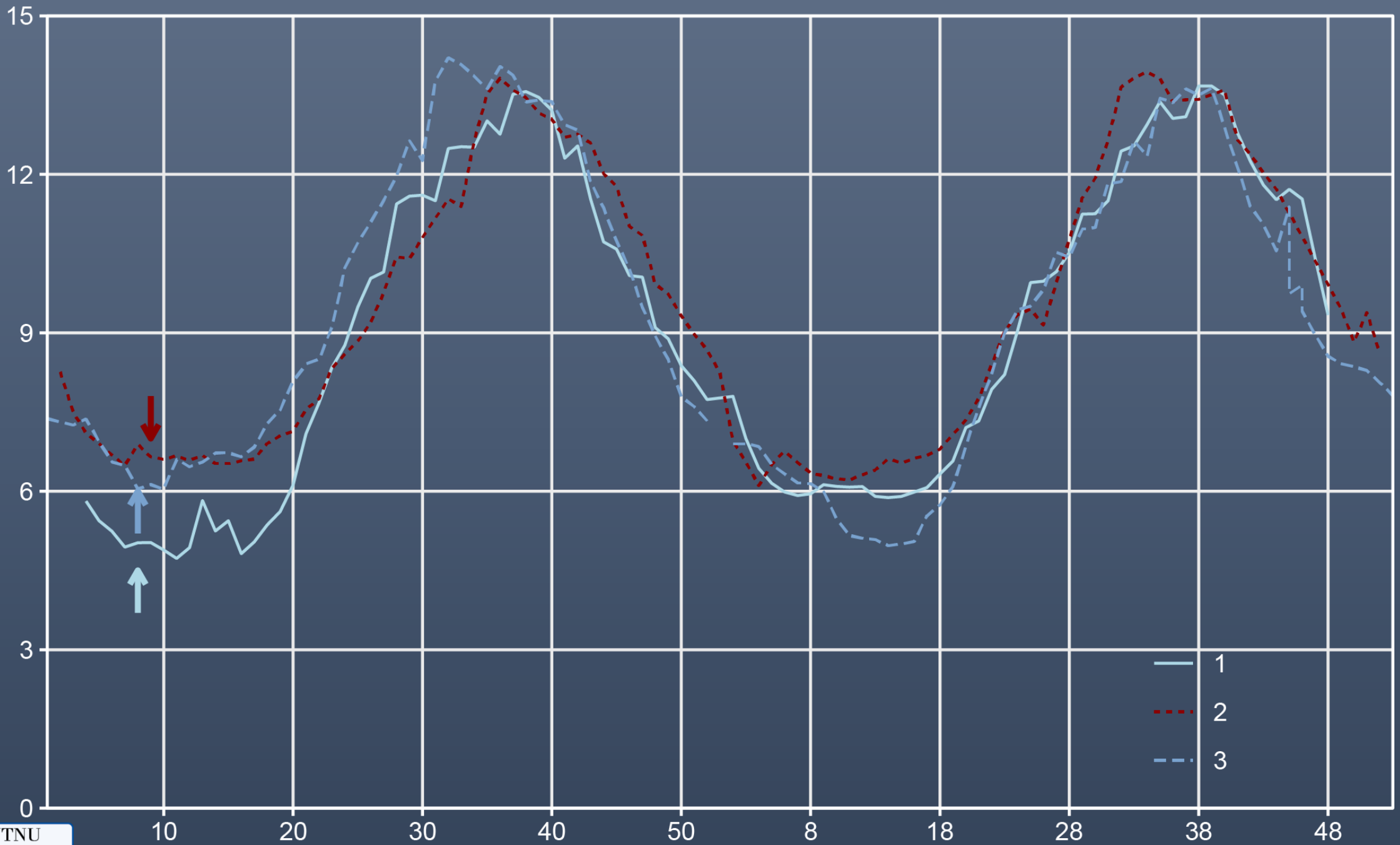


Fastsettende  
Bevegelige  
Voksne holus

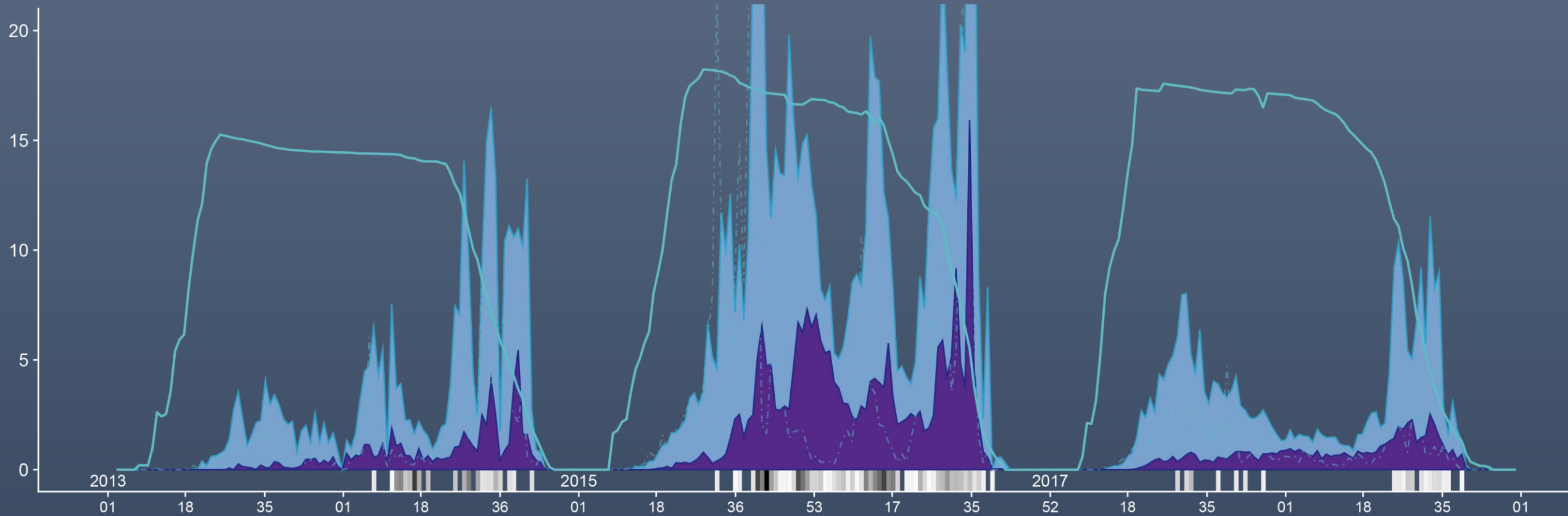
Millioner



Tid  
År  
uke

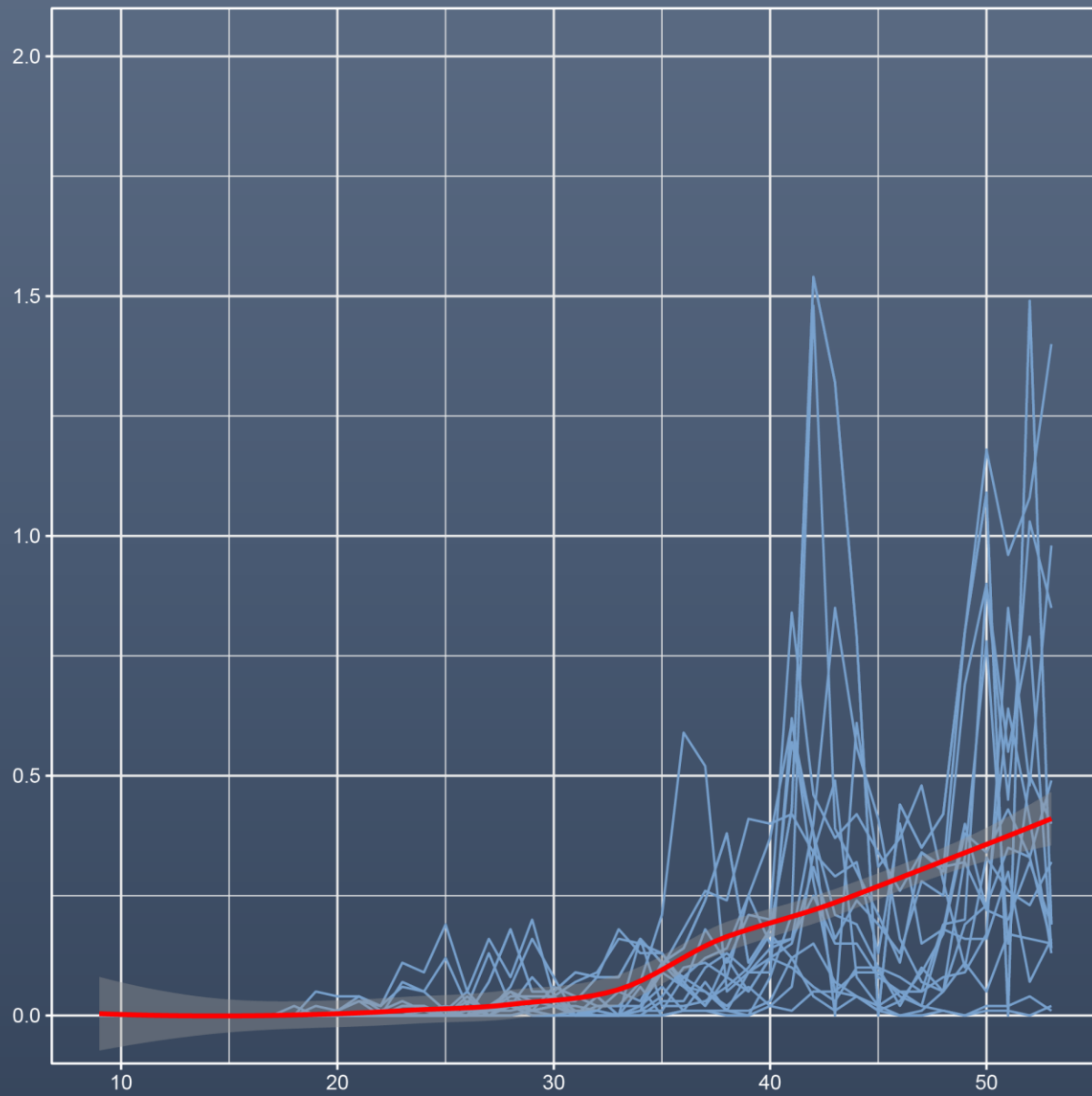


Millioner

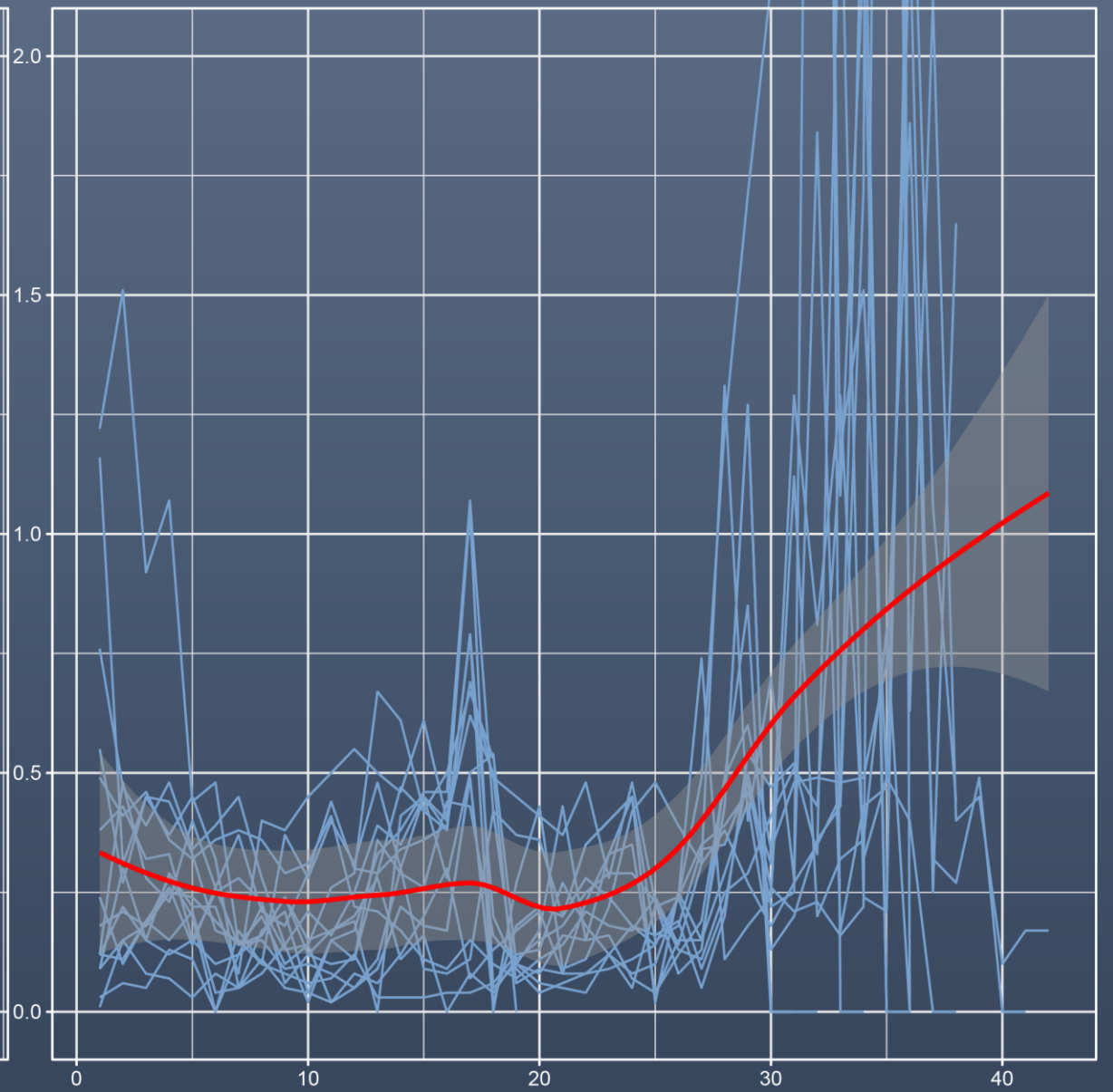


Tid  
År  
uke

Voksne holus per laks



2015



2016

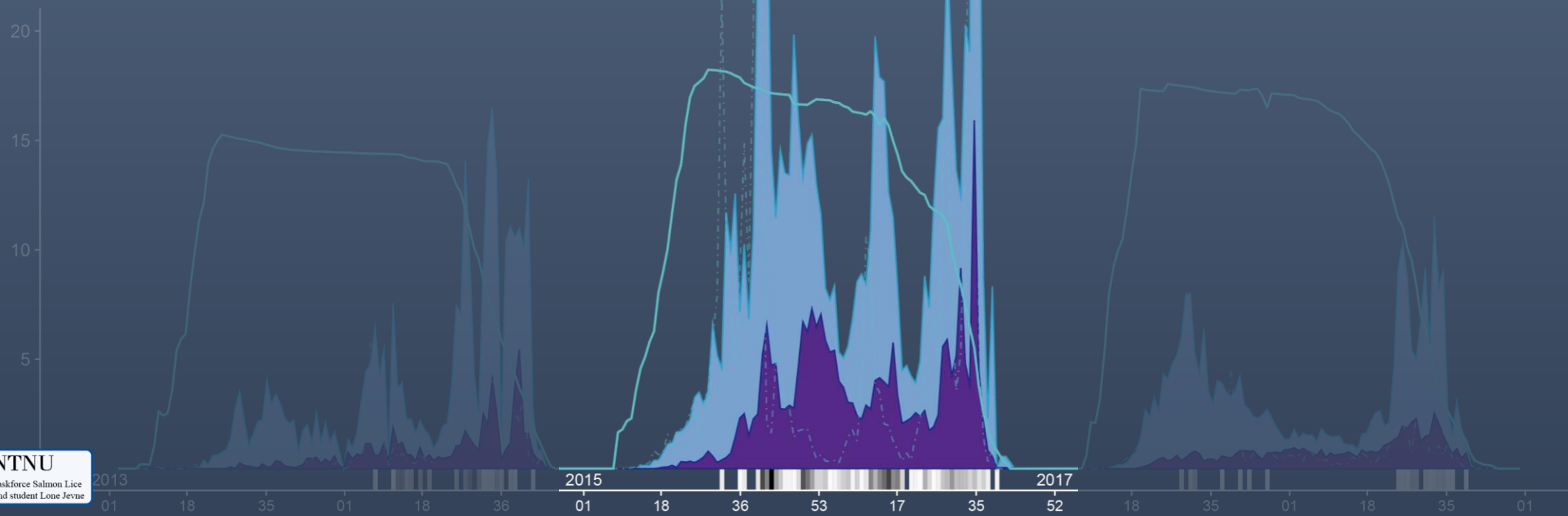
Produksjonssyklus 2

Fastsittende

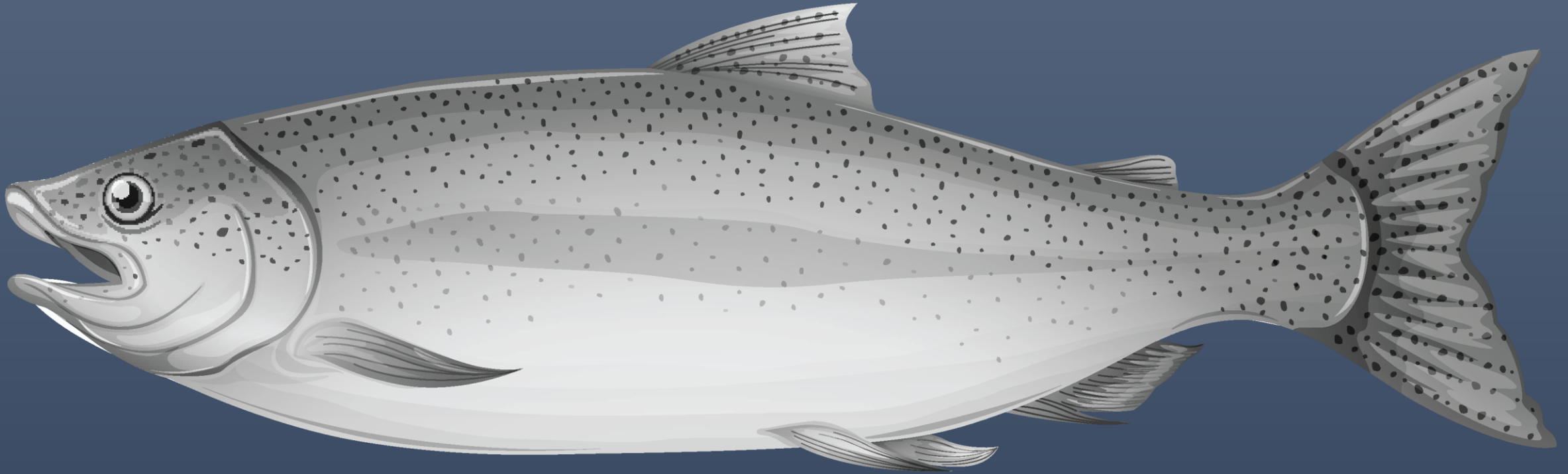


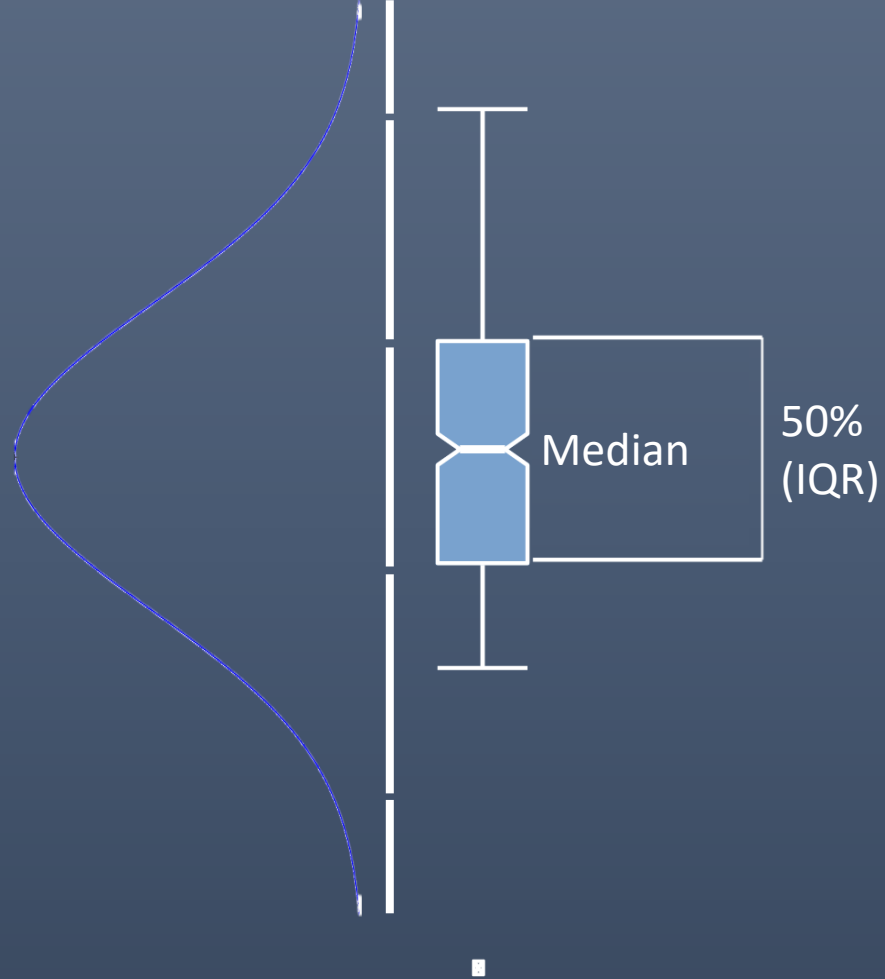
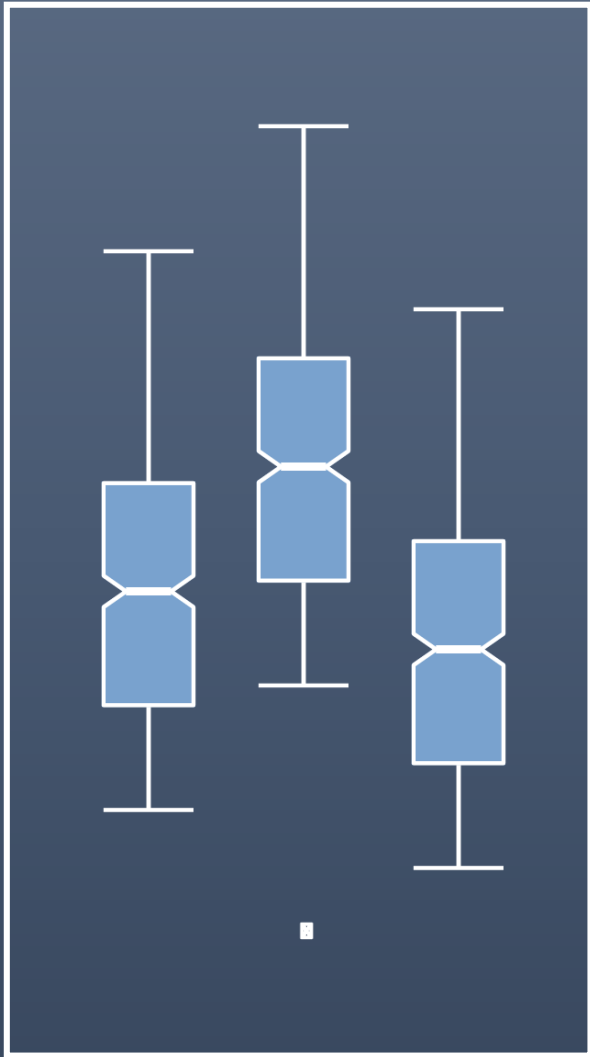
Bevegelige

Voksne holus

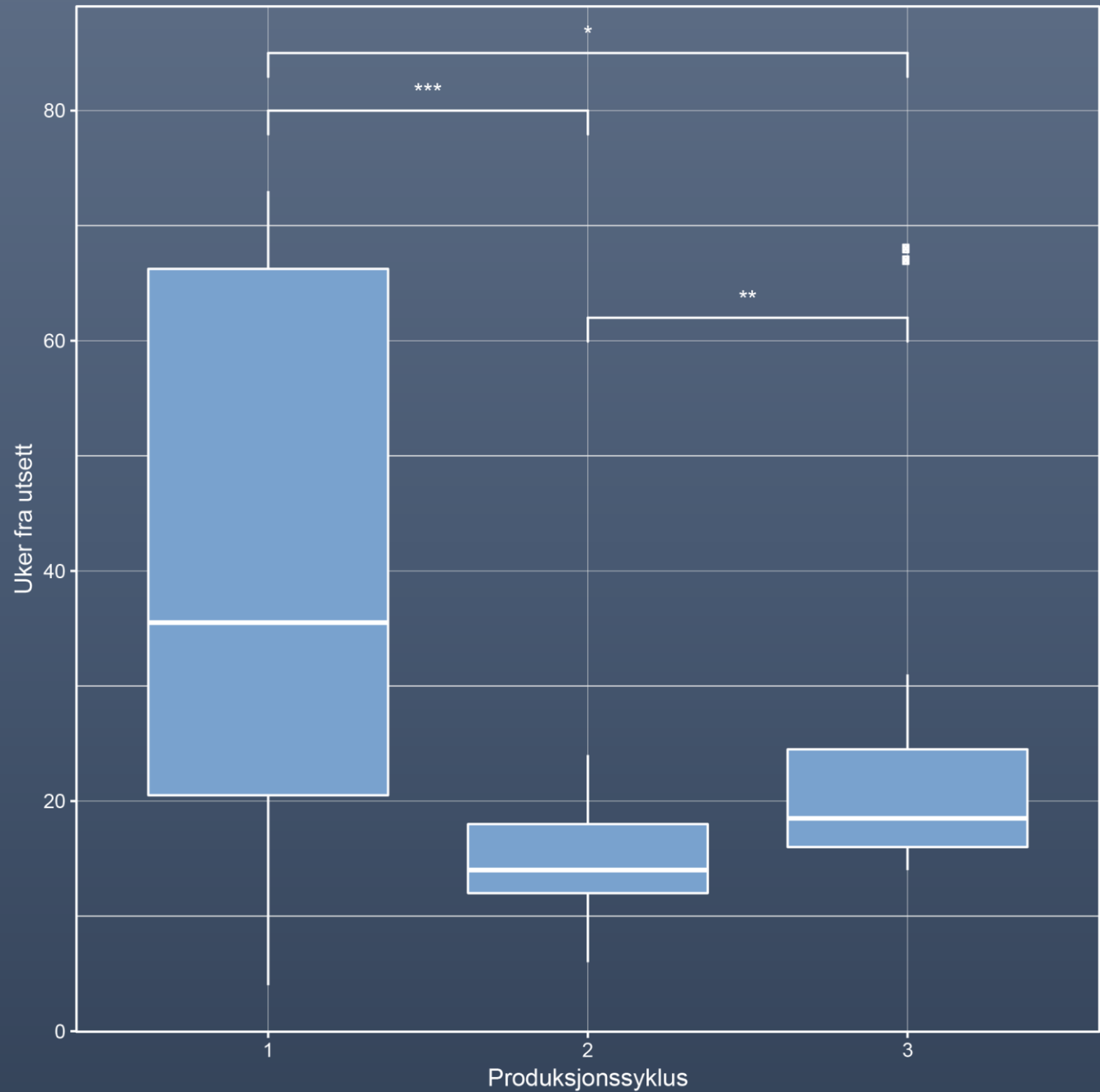


# Når kom påslaget ?



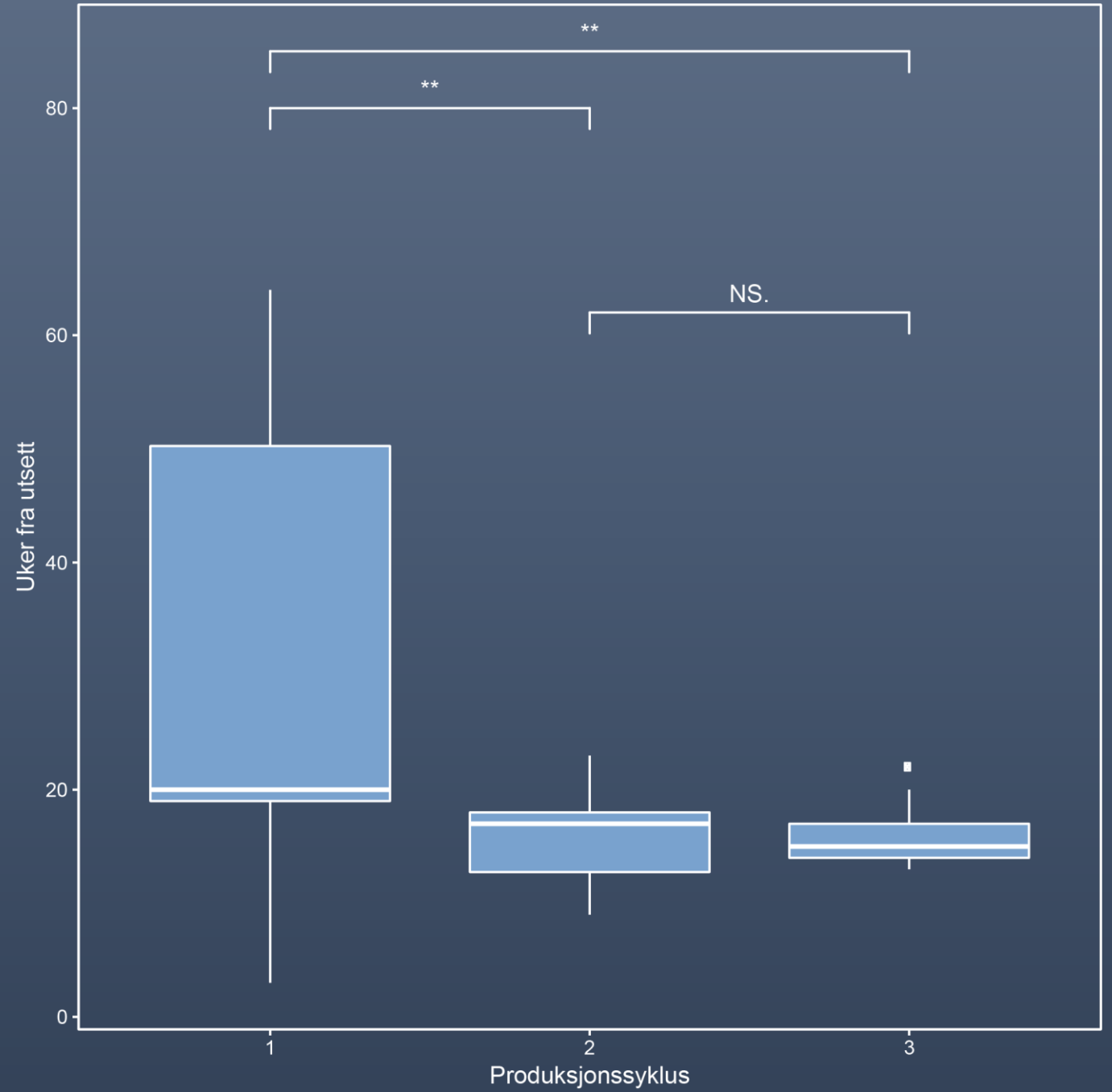


# Tid fra utsett til 0.3 fastsittende lus per laks

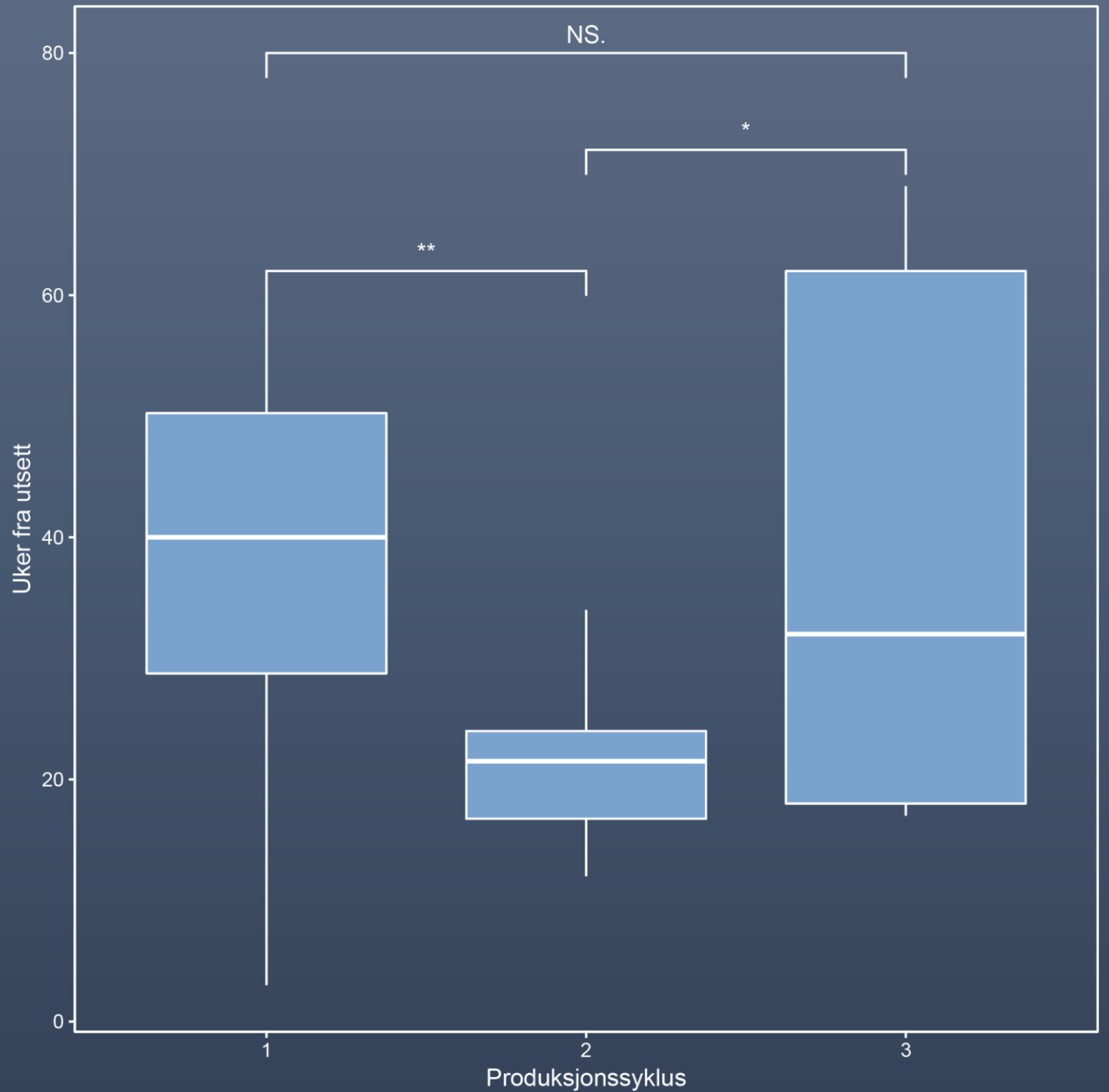


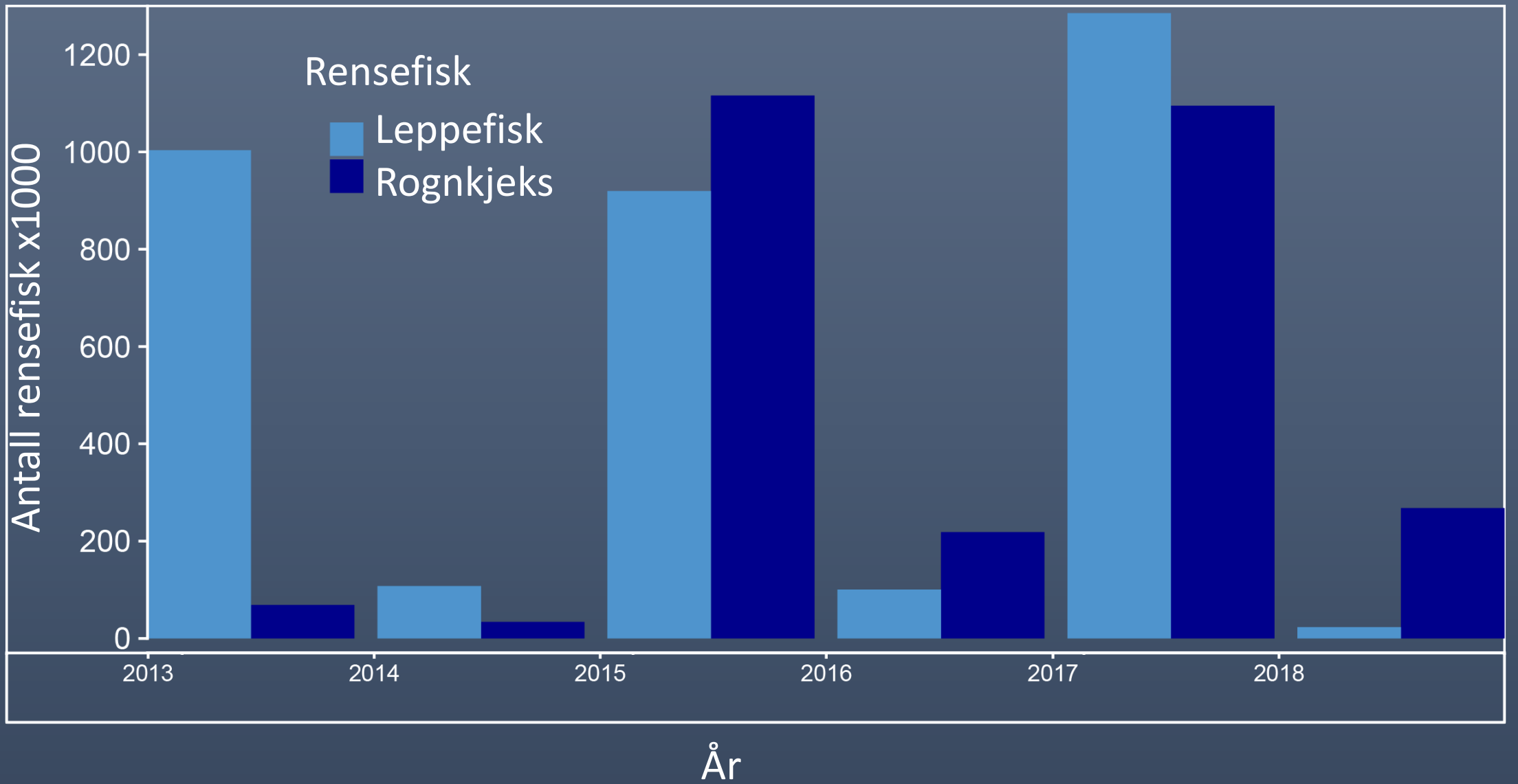


# Tid fra utsett til 0.3 bevegelige lus per laks

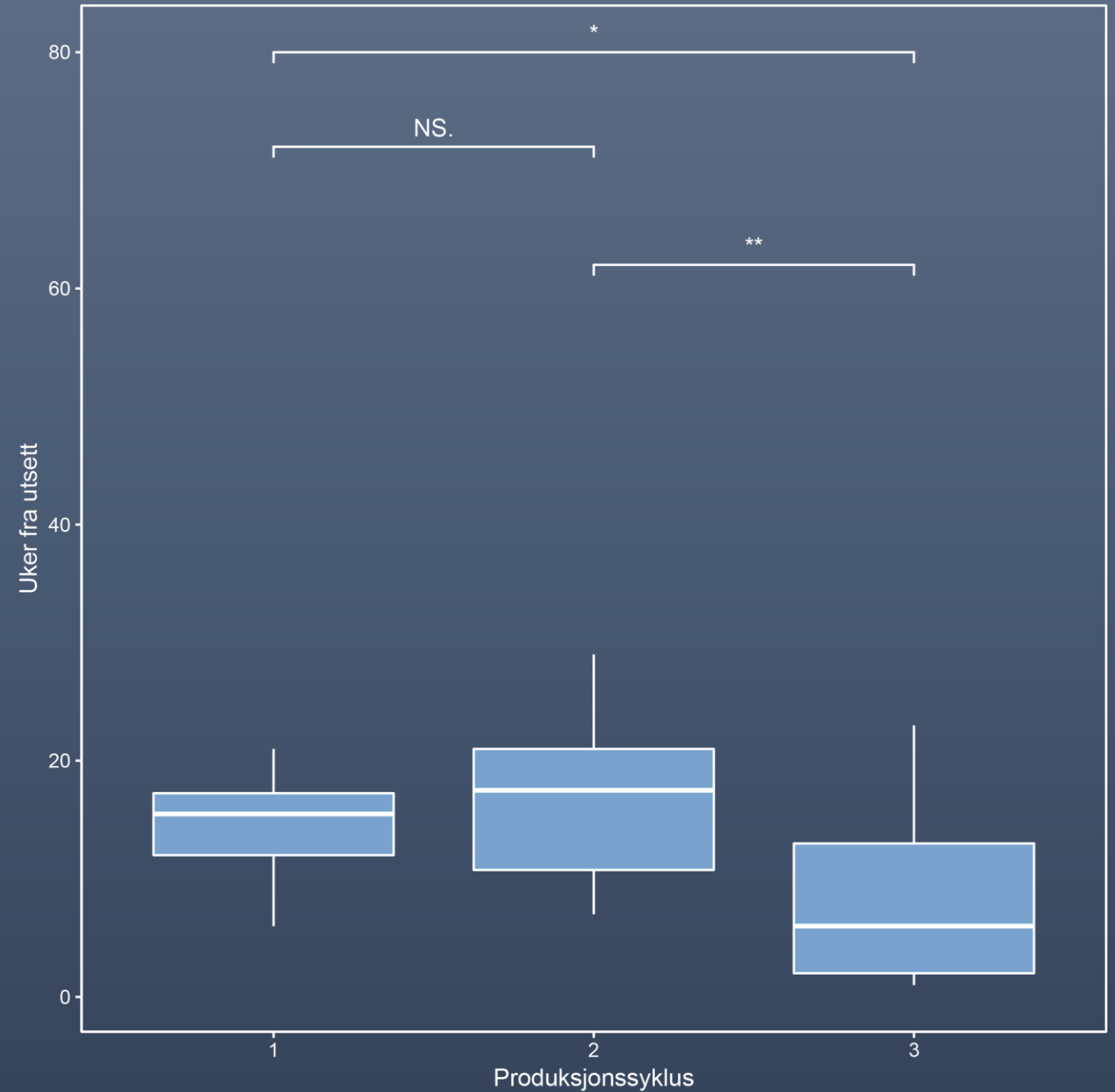


# Tid fra utsett til 0.1 voksen holus lus per laks

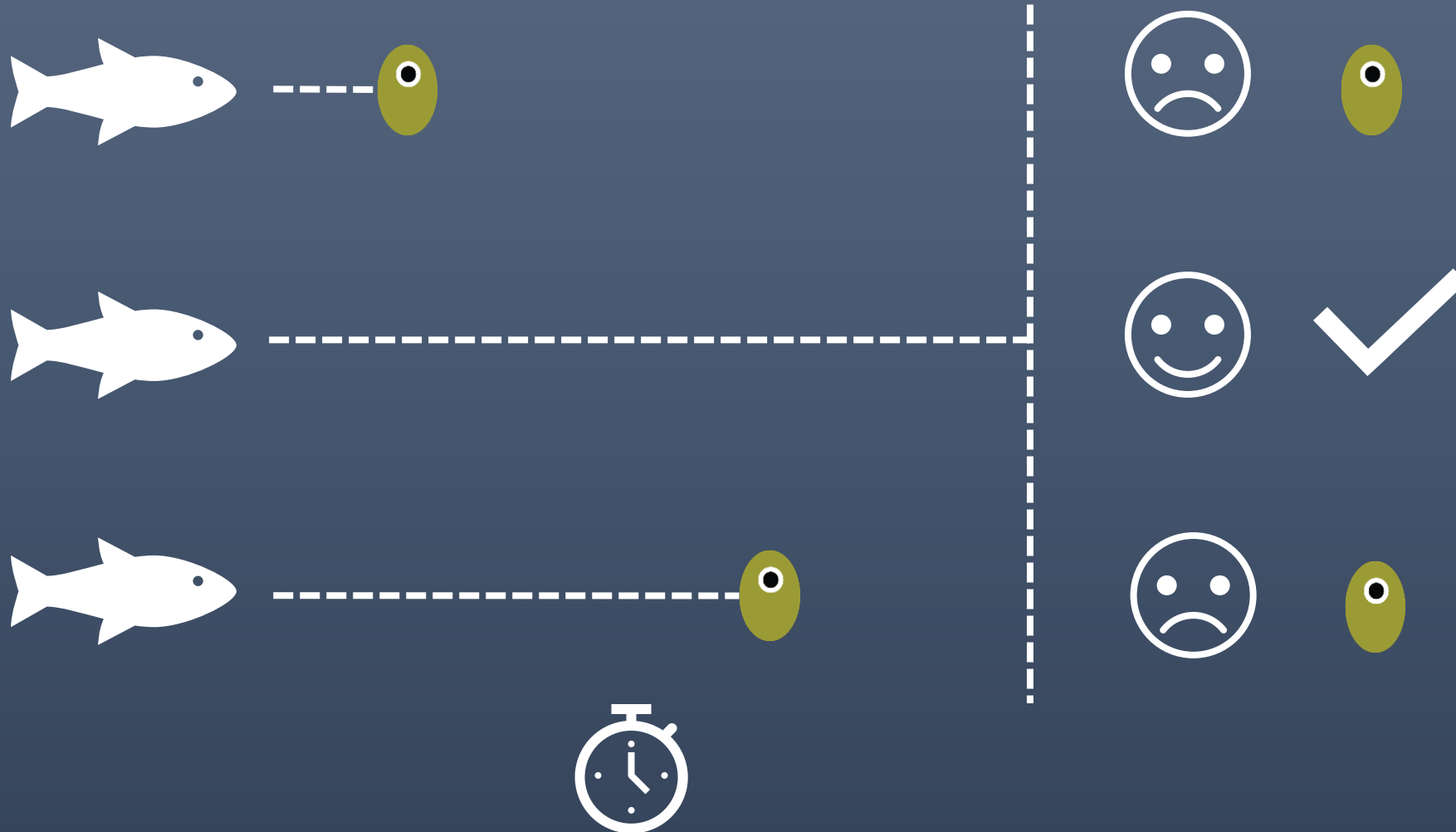




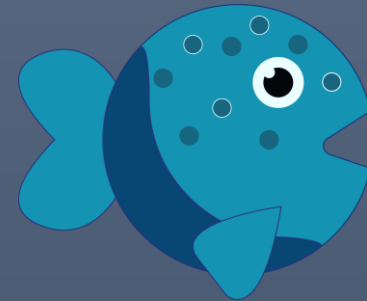
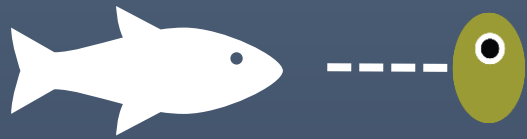
# Tid fra utsett til utsett av første rensefisk



# Overlevelsesanalyse

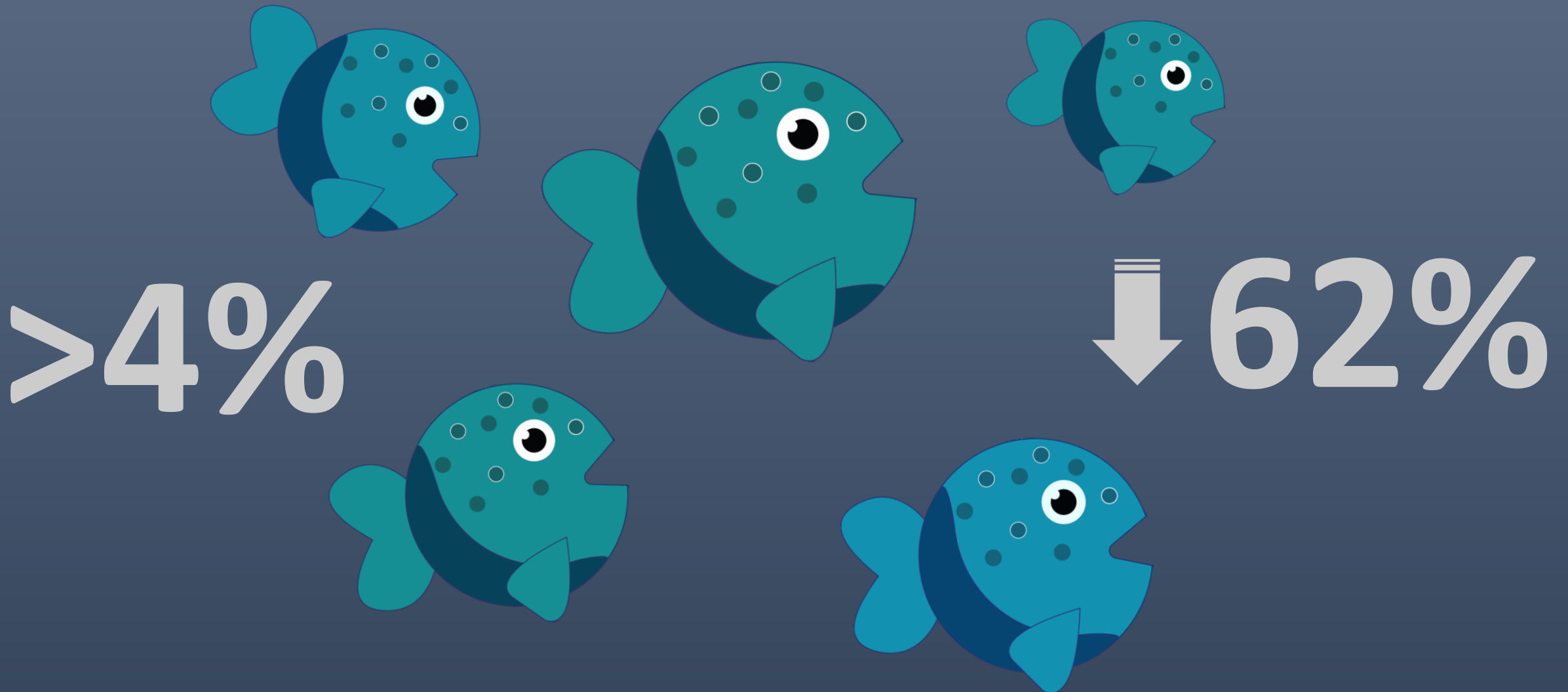


# Overlevelsesanalyser - Tid til 0.1 Voksne holus



< 4%

> 4%



Luseskjørt  
VS  
Uten

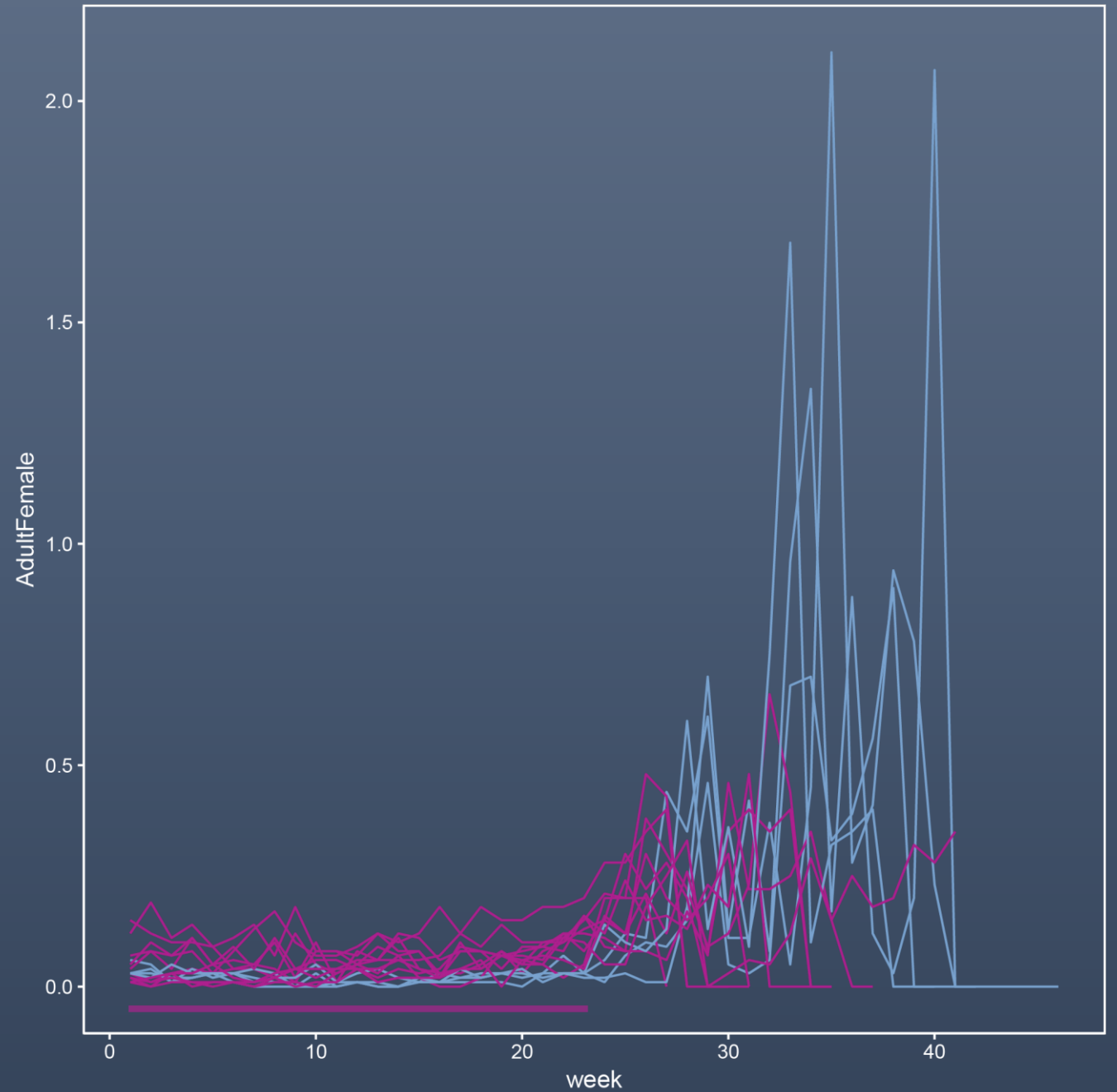
2015-2016: 10% Luseskjørt  
2017-2018: 50% Luseskjørt



# Luseskjørt

## VS

# Uten



# Oppsummering

- Et anlegg er ikke en isolert øy
- Mer lus og flere avlusninger i Pc2
  - Ikke (bare) på grunn av temperatur
- Økt fokus på preventive tiltak
  - Mer rensefisk & flere skjørt
  - Tidligere utsett av rensefisk
- Rensefisk påvirker lus





EMILSEN FISK AS



Måsøval Fiskeoppdrett AS



NTNU Taskforce lakselus

